

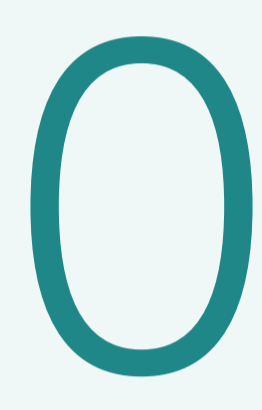
MODA

LIVE BETTER

MODA IS THE UK'S LEADING INVESTOR, DEVELOPER & OPERATOR OF LARGE SCALE RENTAL NEIGHBOURHOODS.

Moda is pioneering innovative change in the rental sector through 'Next Generation Build-to-Rent Neighbourhoods.'

Moda's neighbourhoods provide high-quality, accessible homes with long-term secure tenancies, and a whole host of included amenities. Moda does not take deposits or levy service charges.



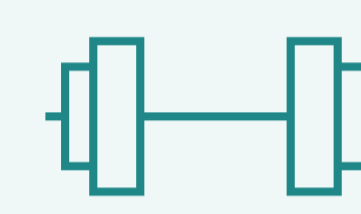
No deposits & fees



Superfast Wi-Fi



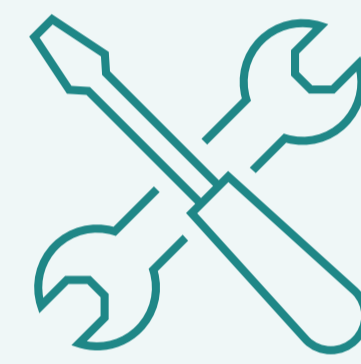
Health & wellbeing programme



Gym & fitness studio



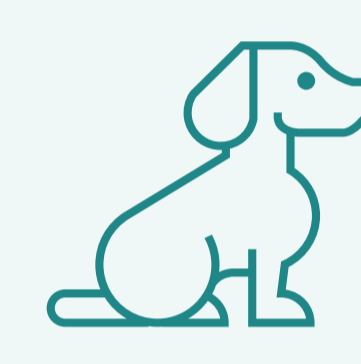
Community events & activations



On-site maintenance



Global leader in 3 star fitwel accreditations



Pets welcome

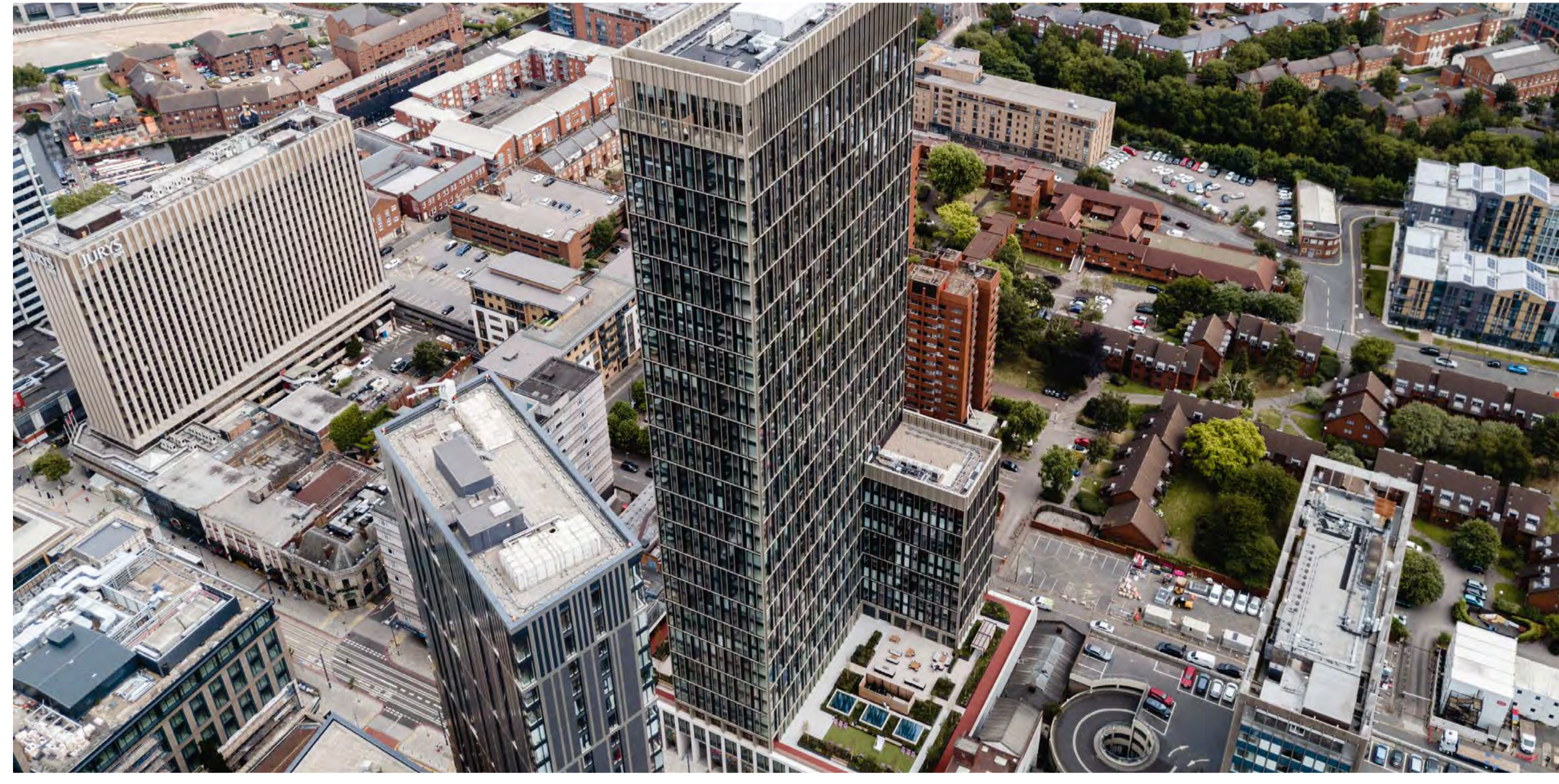


Integrated smart technology

In Birmingham, Moda has an established track record of delivering high-quality new communities.

This includes the award-winning Moda, The Mercian on Broad Street, which has been successfully delivered.

Construction is also underway at Great Charles Square in the Jewellery Quarter. Moda is transforming a 2.6-acre brownfield site which has remained undeveloped for more than 50 years, with 722 new homes, two publicly accessible squares and an array of commercial space.



MODA AT NEW GARDEN SQUARE

Moda is delivering the entire New Garden Square neighbourhood in partnership with Calthorpe Estates.

The new community will span a range of sizes, tenures, and price points to attract a diverse mix of people and build a multi-generational community. This will include

homes at Discounted Market Rent.

Moda is currently delivering Phase One of New Garden Square. This includes 398 new homes for rent, alongside state-of-the-art amenities. Phase One is set for completion in 2024. Plot D is the next site to come forward.

Visit the consultation website:
ngs-consultation.co.uk

Or email:
newgardensquare@plmr.co.uk

MODA
GROUP

CALTHORPE
ESTATES