

COMMUNITY BENEFITS

The delivery of Plot D, as part of the wider New Garden Square Masterplan, will provide significant community benefits.

These include:

450

Quality new homes for rent

£70M+

Overall investment into the local economy

425

Jobs created through construction each year, including apprenticeships

**£4.75M
SPENDING**

Residents expected contribution to additional local spending

**14
JOBS**

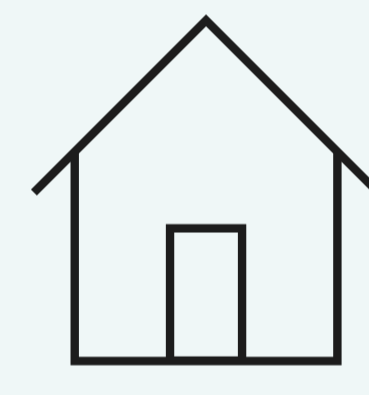
Within the commercial element of the scheme

**£870,000
PER YEAR**

Approximate generated Council Tax



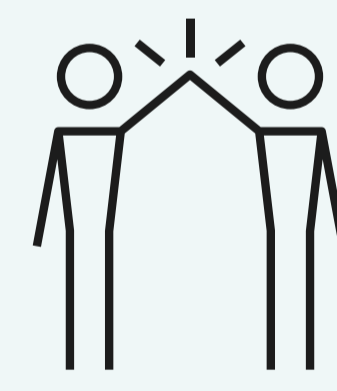
New public park, with urban landscaping to support biodiversity



Provision of affordable homes



New commercial spaces and a dynamic new retail opportunity in Ladywood



Regenerating the site to help tackle anti-social behaviour



Visit the consultation website:
ngs-consultation.co.uk

Or email:
newgardensquare@plmr.co.uk

**MODA
GROUP**

**CALTHORPE
ESTATES**