

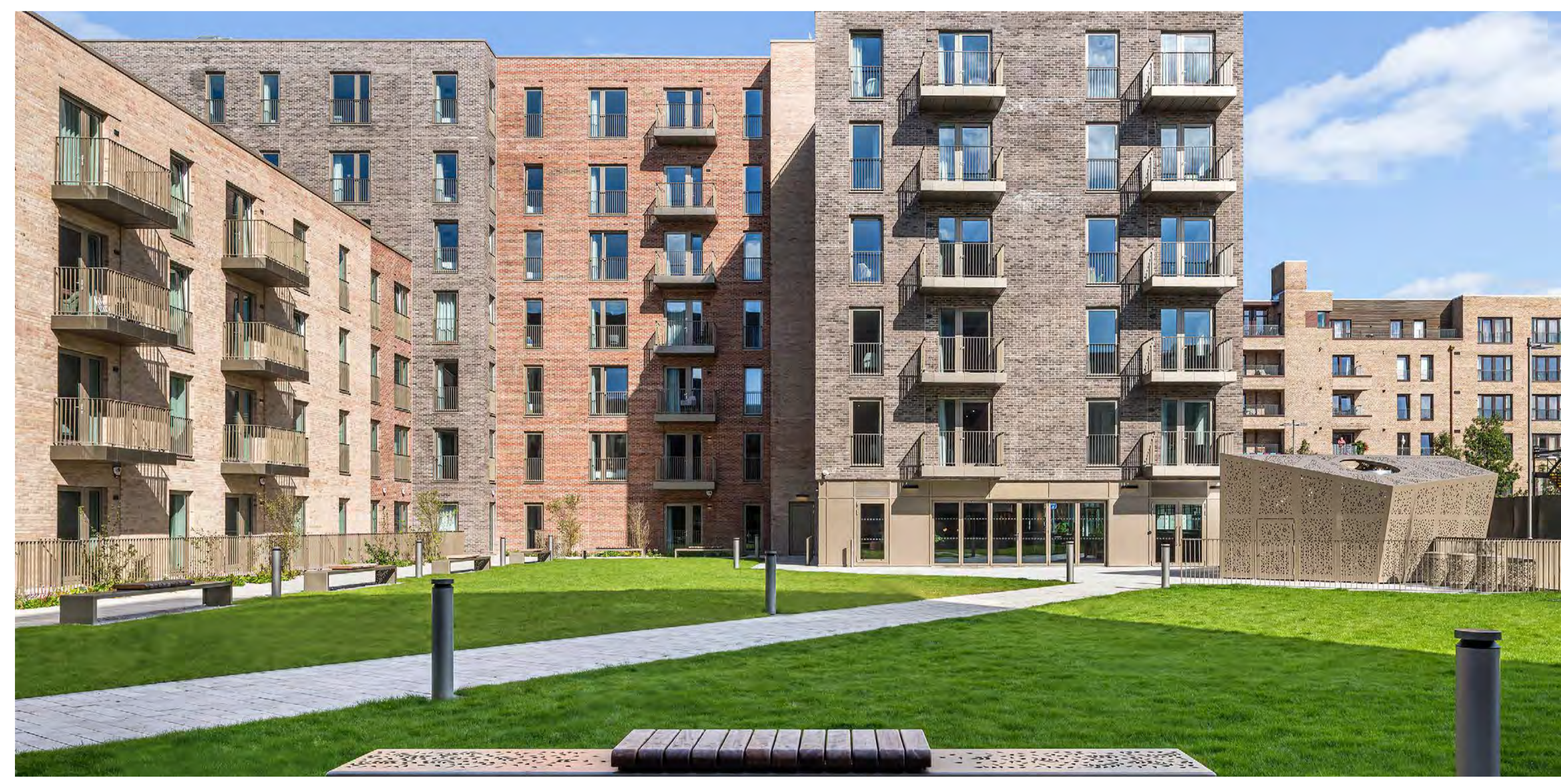
LANDSCAPE & SUSTAINABILITY

The landscape design for Plot D will create a welcoming space for residents and the public. The focus will be on curating a space which is comfortable, safe, visually captivating, and flexible.

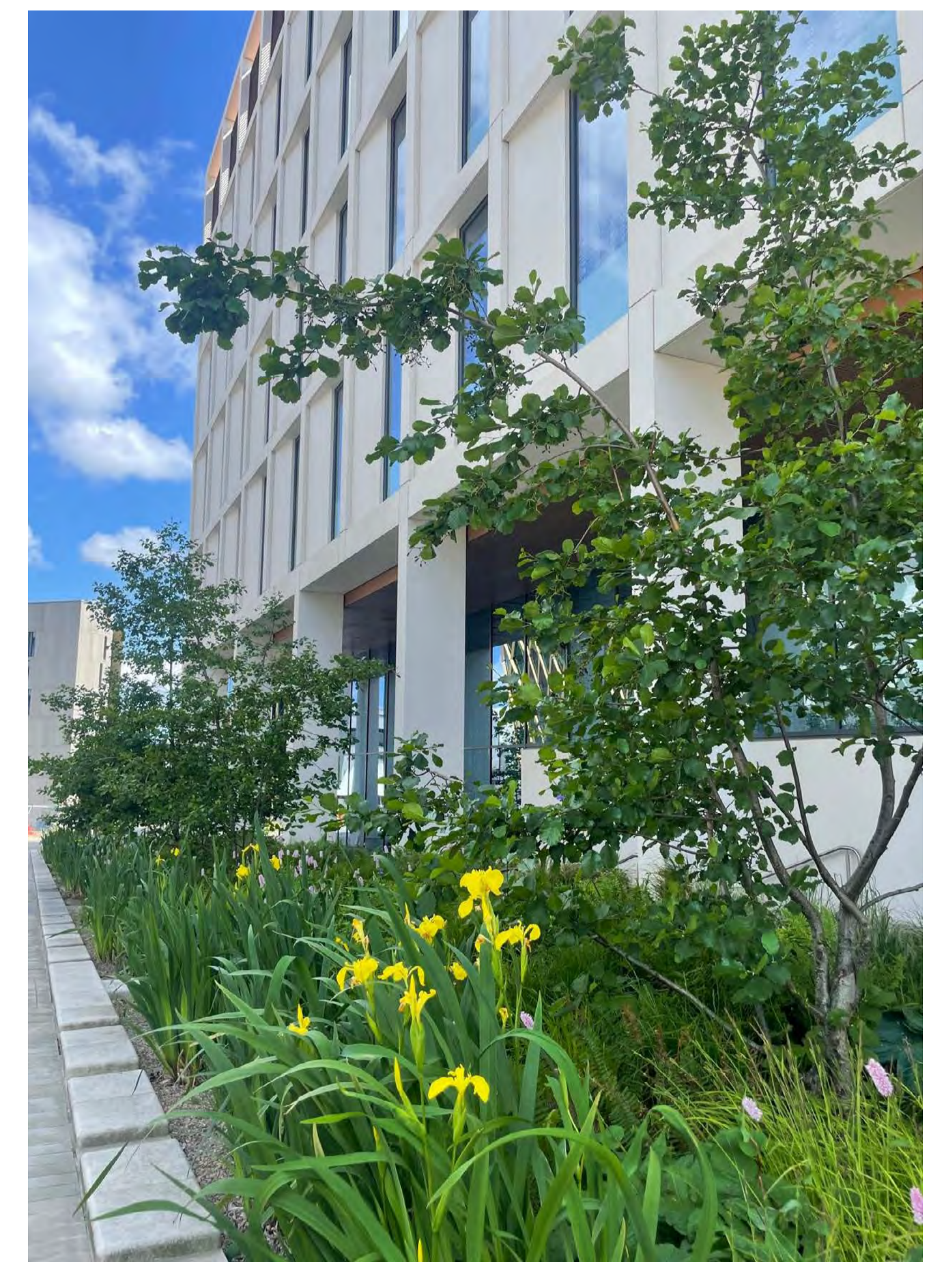
The proposals include several seating areas, along with a lawn and ornamental tree planting. Expansive pathways will encourage residents and the public to move through the space easily.

Natural play areas will be created, using logs, boulders, and stepping logs. Raised, fixed, and moveable planters will be included to promote biodiversity and improve the visual appeal of the area.

A wildflower area will also be included to the north. This will establish a micro-ecosystem, providing excellent habitats for pollinators.



Existing trees will be retained where possible, whilst additional tree planting will enhance a green network. Rain gardens will support natural drainage and provide further biodiversity.



SUSTAINABILITY

Sustainability will be at the heart of the delivery of Plot D – from construction right through to operation. The site is currently an un-utilised brownfield site, which is well located for sustainable public transport.

The regeneration of the site will unlock a sustainable development which can make a meaningful contribution to Birmingham’s housing needs, whilst boosting the biodiversity of the area.

Through construction, an innovative design approach will lower the building’s carbon footprint and include the recycling and re-use of materials. Once operational, the building will be highly energy efficient.

This will draw on smart green technologies, alongside natural ventilation. The building will target an EPC B rating.

Visit the consultation website:
ngs-consultation.co.uk

Or email:
newgardensquare@plmr.co.uk

MODA
GROUP

CALTHORPE
ESTATES